

# TEW-501PC/TEW-503PI

**108Mbps 802.11a/g Wireless PC Card/108Mbps Wireless PCI Adapter  
Quick Installation Guide**

**Guide d'installation rapide  
Adaptateur PCI sans fil 108Mbps/carte PC sans fil 902.11a/g 108 Mbps**

**Kurzanleitung zur Installation  
Drahtlose 108 MBit/s 902.11a/g PC-Karte / Drahtloser 108 MBit/s PCI-Adapter**

**Guía de instalación rápida del  
Tarjeta PC inalámbrica 902.11a/g a 108 Mbps/Adaptador PCI inalámbrico a 108Mbps**

**PC-карта 108 Мбит в сек 902.11a/беспроводный PCI-адаптер 108 Мбит в сек  
Руководство по быстрой установке**

**Version 05.04.2005**



**TRENDnet**<sup>®</sup>  
TRENDware, USA  
**What's Next in Networking**

# Table of Contents

English .....	1
1. Prepare for Installation .....	1
2. Install Wireless Configuration Utility .....	3
3. Install Hardware .....	5
4. Install Drivers .....	7
5. Wireless Configuration .....	9
Troubleshooting.....	11

# English QIG

## 1. Prepare for Installation

Thank you for purchasing the TEW-501PC/TEW-503PI. Your new wireless network adapter will allow you to share the Internet, files, or other resources by connecting you to an 802.11a, 802.11g or 802.11b wireless network. This guide will help you setup and configure your wireless card. Following the installation instructions should be quick and easy. If you run into problems, please refer to the Troubleshooting section or the more detailed installation procedures on the User's Guide CD-ROM. If you need further technical support, please visit [www.TRENDNET.com](http://www.TRENDNET.com) or call by phone.

### Verify Package Contents

Please make sure you have everything in the box:

#### TEW-501PC



#### TEW-503PI



## **Verify Equipment**

Before installing this PCI Card or PC Card, you should have a:

1. Computer with an available 32-bit 3.3V CardBus (TEW-501PC) or 32-bit PCI 2.2 slot (TEW-503PI)
2. 300 MHz processor and 32 MB of memory (Recommended)
3. CD-ROM drive
4. Properly-installed CardBus Controller (TEW-501PC only)
5. 802.11a/802.11g/802.11b Access Point (for Infrastructure Mode) or another 802.11a/802.11g/802.11b wireless adapter (for Ad-Hoc/Peer-to-Peer networking mode).

**Important!** DO NOT install the PCI adapter or PC Card in the computer until instructed to do so. Please follow the instructions in Section 2 before installing the adapter into your computer.

**NOTE:** Due to European Wireless Regulations, Super A Mode is not supported in the EU version.

# 2. Install Wireless Configuration Utility

## Windows 2000/XP SP2

1. Insert the TEW-501PC/TEW-503PI CD-ROM into your computer's CD-ROM drive; the installation menu will appear automatically. If the window does not appear automatically, click **Start**, click **Run**, and type **E:\Autorun.exe** in the text-field. Click **OK** to start the installation.

**NOTE:** Replace "E" in "E:\Autorun.exe" with whichever letter is assigned to your CD-ROM drive.

2. On the Installation Menu, click **Install Utility**.



3. Follow the Install Shield Wizard's instructions to install the wireless configuration utility.



4. Click **Finish** and manually shutdown your computer to begin hardware installation.



## 3. Install Hardware

**If you are installing the TEW-501PC Wireless PC Card:**

*Proceed only if you have already completed the steps in Section 2*

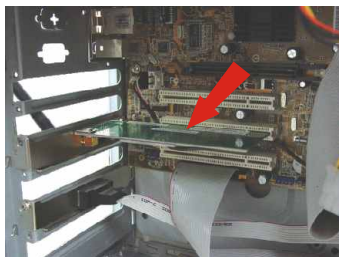
1. Shut down your computer.
2. Insert the PC Card firmly into your notebook PC's open PC Card slot. Only the plastic end-piece should protrude from the slot.
3. Reboot your computer.



**If you are installing the TEW-503PI Wireless PCI Card:**

*Proceed only if you have already completed the steps in Section 2*

1. Shut down your computer.
2. Open your computer case to reveal the motherboard and expansion slots.  
(Please refer to your computer's user manual if you need help opening the case)
3. Insert the wireless card into one of the motherboard's free PCI slots. Press down firmly and evenly on the card until it snaps into place.
4. Screw the PCI Card's metal bracket into your case with a standard bracket screw. Attach the included antenna to the connector on the back of your card.
5. Close your computer case, and reboot your computer.

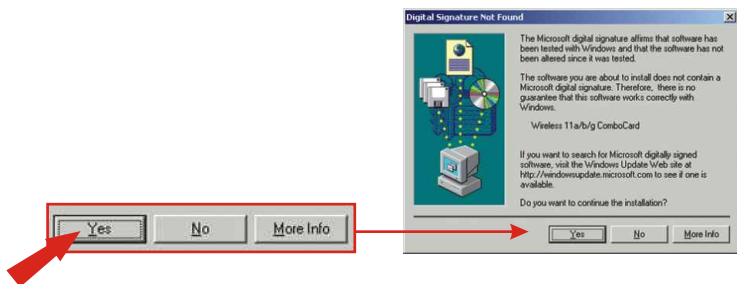




# 4. Install Drivers

## Windows 2000

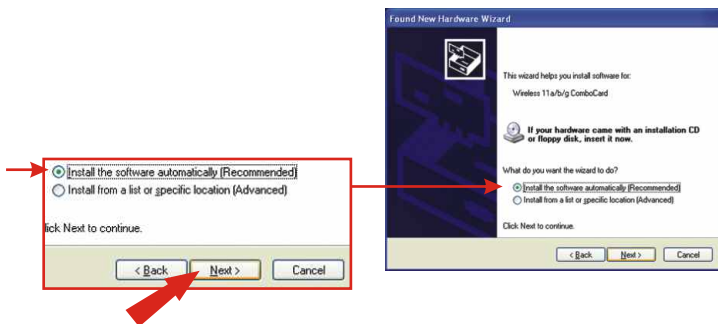
1. After rebooting your computer, a message will tell you that the driver you are about to install “does not contain a digital signature” and will ask you if you want to continue the installation. Click **Yes**.



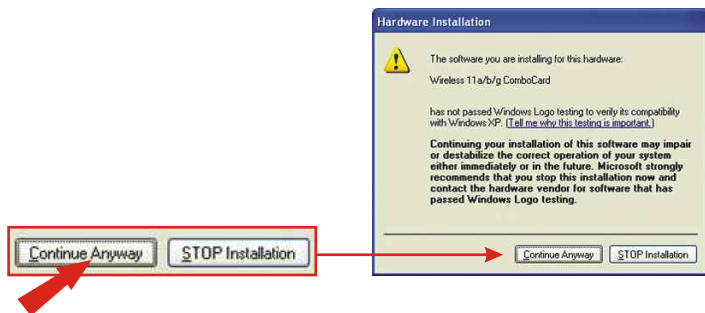
2. Continue to Section 5 of this Quick Installation Guide to continue configuring your wireless card.

## Windows XP

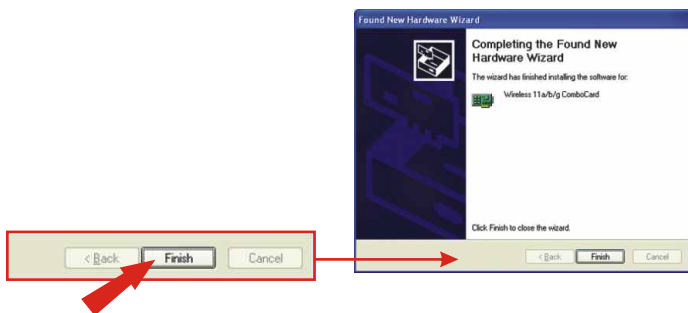
1. After your computer reboots, the “Found New Hardware Wizard” will appear. Select **Install the software automatically** and click **Next**.



2. A warning message will tell you that the device you're installing has not yet been certified for Windows XP compatibility. Click **Continue Anyway**.



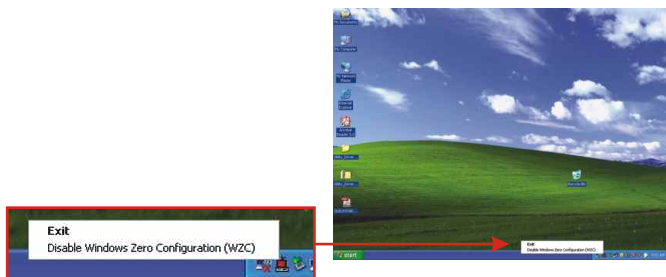
3. Click **Finish**.



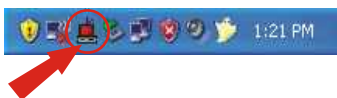
Continue to Section 5 of this Quick Installation Guide to continue configuring your wireless card.

# 5. Wireless Configuration

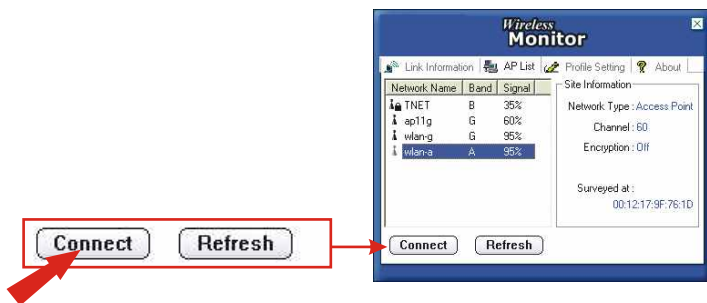
1. For Windows XP users, please disable **Window's Wireless Zero Configuration** before going to step 2. Right click on the wireless monitor located at the bottom right hand corner, and select **Disable Windows Zero Configuration**.



2. Double-click the wireless computer icon in your system tray (next to the clock in the bottom right corner of your screen).



3. Click the **AP List** tab, select the SSID that you want to connect to and click **Connect**.



4. Click the **Link Information** tab and verify that you are connected to the Internet.



5. The TEW-501PC/TEW-503PI will wirelessly connect to your access point. If your access point has been configured for security purposes, please consult the User's Guide in the accompanied CD-ROM for advanced wireless connections.

# Troubleshooting

**Q1: I completed all the steps in the quick installation guide, but my card isn't connecting to my access point. What should I do?**

**A1:** You should first verify that the Network card's SSID matches your wireless router or access point's SSID. If they already match, you should check your TCP/IP properties to ensure that **Obtain an IP address automatically** is selected. Refer to your Windows User's Manual if you are unable to locate your TCP/IP properties.

**Q2: Windows is unable to recognize my hardware. What should I do?**

**A2:** Make sure your computer meets the minimum requirements as specified in Section 1 of this quick installation guide. Also, you must install the wireless configuration utility (as described in Section 2) BEFORE you physically install your network card. Lastly, you may consider moving the card to a different PCI/PC Card Slot.

**Q3: I cannot open the wireless configuration utility. What should I do?**

**A3:** Go to your device manager (control panel > system) to make sure the adapter is installed properly. If you see a networking device with a yellow question mark or exclamation point, you will need to reinstall the device and/or the drivers.

If you still encounter problems, please refer to the User's Guide CD-ROM or contact technical support.

This equipment has been tested and found to comply with FCC and CE Rules. Operation is subject to the following two conditions:

- (1) This device may not cause harmful interference.
- (2) This device must accept any interference received including interference that may cause undesired operation.



### **Federal Communication Commission Interference Statement**

This equipment has been tested and found to comply with the limits for a Class B digital device, pursuant to Part 15 of the FCC Rules. These limits are designed to provide reasonable protection against harmful interference in a residential installation. This equipment generates, uses and can radiate radio frequency energy and, if not installed and used in accordance with the instructions, may cause harmful interference to radio communications. However, there is no guarantee that interference will not occur in a particular installation. If this equipment does cause harmful interference to radio or television reception, which can be determined by turning the equipment off and on, the user is encouraged to try to correct the interference by one of the following measures:

- Reorient or relocate the receiving antenna.
- Increase the separation between the equipment and receiver.
- Connect the equipment into an outlet on a circuit different from that to which the receiver is connected.
- Consult the dealer or an experienced radio/TV technician for help.

This device complies with Part 15 of the FCC Rules. Operation is subject to the following two conditions: (1) This device may not cause harmful interference, and (2) this device must accept any interference received, including interference that may cause undesired operation.

FCC Caution: Any changes or modifications not expressly approved by the party responsible for compliance could void the user's authority to operate this equipment.

### **IMPORTANT NOTE:**

FCC Radiation Exposure Statement:

This equipment complies with FCC radiation exposure limits set forth for an uncontrolled environment. This equipment should be installed and operated with minimum distance 20cm between the radiator & your body.

If this device is going to be operated in 5.15 ~ 5.25GHz frequency range, then it is restricted in indoor environment only.

This transmitter must not be co-located or operating in conjunction with any other antenna or transmitter.

TRENDware declares that TEW-501PC and TEW-503PI ( FCC ID: RYK-WL711A and RYK-WL760A ) are limited in CH1~CH11 for 2.4 GHz by specified firmware controlled in U.S.A.



## Product Warranty Registration

Please take a moment to register your product online.  
Go to TRENDware's website at <http://www.TRENDNET.com>

## TRENDnet Technical Support

### US/Canada Support Center

**Contact**

**Telephone:** 1(310) 626-6252

**Fax:** 1(310) 626-6267

**Email:** [support@trendnet.com](mailto:support@trendnet.com)

**Tech Support Hours**

7:30am - 6:00pm Pacific Standard Time

Monday - Friday

### European Support Center

**Contact****Telephone**

Deutsch : +49 (0) 6331 / 268-460

Français : +49 (0) 6331 / 268-461

Español : +49 (0) 6331 / 268-462

English : +49 (0) 6331 / 268-463

Italiano : +49 (0) 6331 / 268-464

Dutch : +49 (0) 6331 / 268-465

**Fax:** +49 (0) 6331 / 268-466

**Tech Support Hours**

8:00am - 6:00pm Middle European Time

Monday - Friday

**TRENDware International, Inc.**  
3135 Kashiwa Street. Torrance, CA 90505  
**<http://www.TRENDNET.com>**